

Live The Whittley Dream

WHITSUNDAY

Introducing the Whittley

Cruisemaster 700, a very special Australian luxury cruiser wholly designed and meticulously built by the Whittley family in Melbourne, Victoria. The Cruisemaster 700 follows a near 50 year tradition of boat building which commenced when brothers Jim and

Ozzie Whittley first built timber boats in Bulleen, Victoria, back in the 1950's. It grew as the business changed over to use the 'wonder' boat building material - fibreglass - when it first started being used, in the early 1960s. But as traditional wooden boat builders, the Whittley brothers were not about to stop

building or finishing their boats with lashings of beautifully hand-shaped, timber trim and linings, a tradition carried on to this very day. Today, in this high powered world of intense technological change and pressure, the Whittley boat building business is like

a breath of fresh air. Traditional boat building values; traditional standards of quality control and just plain old fashioned good service are still the hallmarks of the Whittley family business. Today's operational directors, brothers Neville and Steve Whittley, are deservedly proud of the many achievements, accolades and Awards, Whittley cruisers have attained through the years



Keeping the 'boys' on the ball, patriarch Jim Whittley is still absorbed by the family business, and was deeply involved in development of the Cruisemaster 700.

Mind you, today's Whittley premises are a far cry from the original shed in

Bulleen in the 1950's. Without exception, visitors to the facility remark on the factory's remarkable cleanliness, and the happiness of the staff, many of whom have been with the family for 20-30 years.

Launching the Cruisemaster 700

involved a 2 year development program, hundreds of hours of mould production, countless hours of discussions with Whittley's close knit dealer network, and many sessions with existing Whittley owners in the unique Whittley owner's associations. The challenge was to maintain the renowned Whittley standard of finish, provide a range of additional comforts and features, in a cruiser with even higher standards of seaworthiness and performance.

At the core of the mission statement, was the Whittley family's determination to build a quality product that would allow families the opportunity to safely trailer their Whittley around Australia; exploring

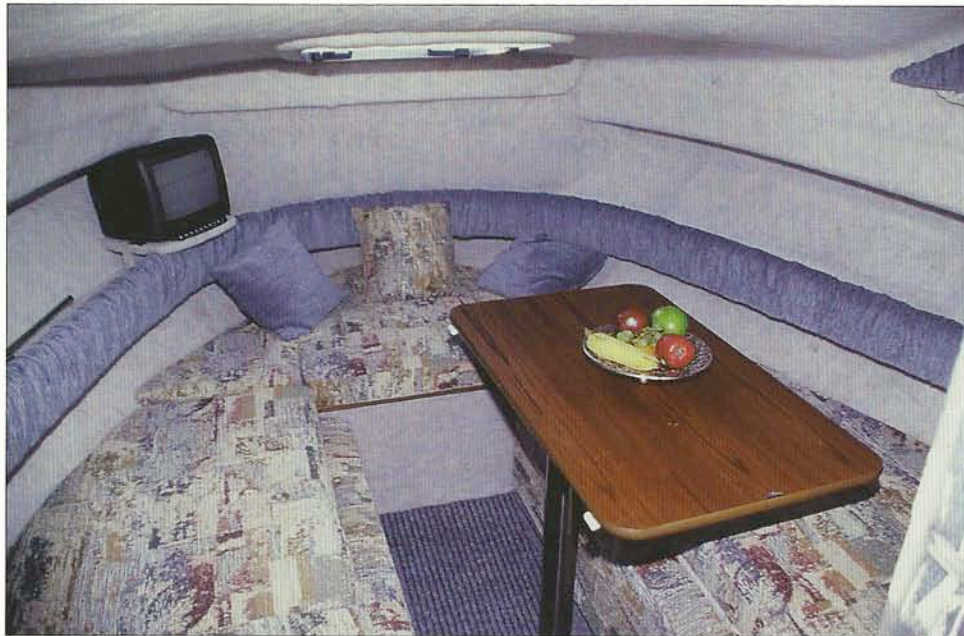
new and exciting waterways, the Great Barrier Reef - or just enjoying a quiet trip up the river from home, on a lazy Sunday afternoon.

The Whittley Cruisemaster 700 is an exceptional craft. It sleeps up to four adults on two doubles, but is easily handled alone, let alone by a couple. It is a quiet, refined, safe and comfortable cruiser capable of handling any of Australia's wider bays and estuaries (such as Melbourne's Port Phillip Bay, Brisbane's Moreton Bay, Sydney's three big harbours, the SA Gulfs, or the run over to Perth's Rottnest Island, etc) with ease, virtually regardless of the weather. The performance offshore is exemplary, and will no doubt lead to many lucky owners making their first Great Barrier Reef cruise (typically from Town of 1770, out to Lady Musgrave Island and beyond) not to mention the dozens of other such near-shore cruises Australians can undertake with a powerful seakeeper like the Whittley Cruisemaster 700.



Photographs may show optional equipment

Deliverance



Privacy, convenience and comfort . . . key words describing the forward cabin of the Cruisemaster 700.

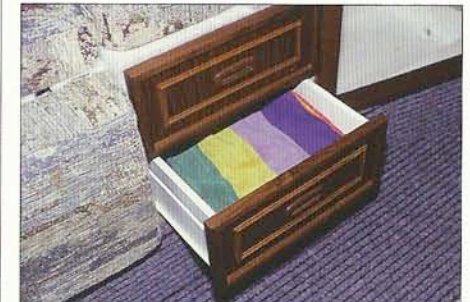
Privacy . . . to change clothes, to enjoy intimate moments, or just to escape for a quiet read or a lazy afternoon snooze.

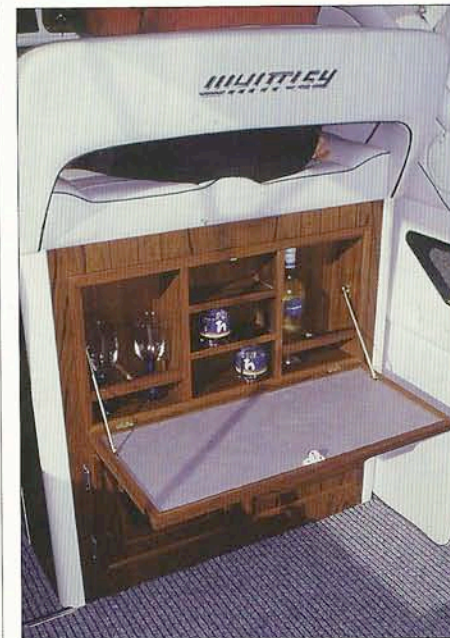
The shower and toilet room is completely separate and enclosed, and features pressure hot and cold water to the hand basin and shower - essential matters for live-aboard holidays and lost weekends.

Convenience . . . so the table swings

away for easy access to the front hatch. It can be removed in seconds, or make up the queen sized double berth. And there's plenty of storage for clothes and personal belongings, too, under every nook and cranny.

Comfort . . . deep cushioned berths with ample headroom (most women can easily stand in the forward cabin); soft-to-touch wall lining and ceiling fabrics and a welcoming *ambiance* underlines Whittle's considerable experience in creating a real home away from home.





The art of live-aboard or day boat cruising in comfort and style, has been described as walking a path



between the needs of a gourmet chef and most people's desire *not to do anything* - much less *cooking* - on those special days away in the Whittley.

Food storage, refrigeration, cooking, washing, wiping and re-storage are

thus necessary concerns in a cruising world, but ideally, they should never be a chore.

The Cruisemaster 700

is masterfully designed to cope - *even*



for quite large family days - with a minimum of fuss and minimal cleaning. Easy care galley benchtops, stainless

steel sink and spirit hotplates, microwave oven, fridge/freezer, ice chest, cutlery drawer and plenty of grocery storage,



ensure that if you do have to cook up a storm, you can, easily.

Importantly too, the galley is well lit and ventilated, and as the 'hub' of the boat, it is perfectly positioned next to everything, but nicely out of the way of the actual operation of the boat.

Whittley Cruisemaster 700 SPECIFICATIONS

Moulded Length	7.00 m
Garaged BMT Length	8.2 m
Garaged Clearance Height	3.0 m
Maximum Beam	2.55 m
Hull Deadrise	21°
Fuel Capacity	200 L
Water Capacity	130 L

Engines: Maximum power:

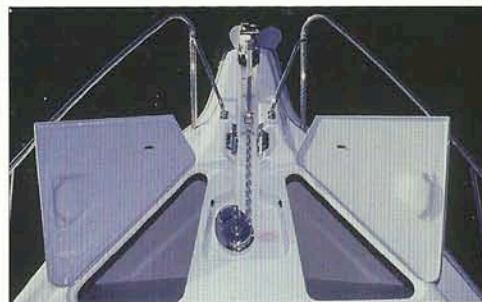
Sterndrive	300 hp petrol
	230 hp diesel

Minimum power:

Sterndrive	210 hp V-6 petrol
	170 hp diesel



People often comment *"there is nothing even close to a Whittle on the market"* and even a cursory study of the Cruisemaster 700 foredeck and rear cockpit shows why. This is a 7.0 m trailerable cruiser with extraordinary



attention to detail. Two rope lockers compliment the electric anchor winch system; the unique Whittle stand-through sun roof (ideal when trying to choose the best track into a coral lagoon); the rigid hardtop over the cockpit for weatherproofing and vitally needed shade control; the standard solar panel and battery management system . . . this is truly a 'one of a kind' *Australian* cruiser reflecting decades of experience on Australian waters. The rear cockpit of the Cruisemaster 700

too, is another example of Whittle thinking. The padded rear engine box and seating set-up is cleverly designed to maximise the many and varied functions a rear cockpit can be called upon to perform. In minutes, the Cruisemaster's rear cockpit can be changed from a fishing or diving platform, re-worked as a delightful outdoor dinette or cocktail lounge - before being turned down to make a stunning double berth under the stars. This *is* the Whittle difference.

Engine and drive systems for a Whittley Cruisemaster 700 can be provided from any number of different sources, and includes petrol and diesel sterndrives from MerCruiser and Volvo Penta. However, by far the most common installation is still the silky smooth, fuel injected, 220 hp 5.0 litre (or 5.7 L) V-8 petrol MerCruiser sterndrive. This popular unit offers an excellent compromise between fuel economy, handsome performance and of course, complete reliability. Installed by Whittley's own skilled staff, the MerCruiser installation is widely recognised as one of the best in Australia.

Trailering the Whittley is far easier than many people first think. It is certainly a substantial craft. Typically, loaded for the holidays, the complete BMT package weighs in the 2.5 - 3.0 tonne range. However, subject to State's ratification, the 1999 National Trailer Rules and Regulations being promulgated in Australia, enable many popular 4WD vehicles such as the Toyota LandCruiser, Range Rover, Nissan Patrol, (etc) to legally - and safely - tow the Cruisemaster with ease. Trailered on one of the latest Mackay or Easy Tow boat trailers with an appropriate tandem axle (four wheel) braking system, the Whittley 700 is so easily driven on and off the trailer (or winched on and off, if you'd prefer not to immerse the trailer) in just a few minutes - and neither the vehicle driver nor the crew even get their feet wet in the launching and retrieval process.



Whittley Marine Industries Pty Ltd Warranty

NEW BOAT WARRANTY: In addition to all other rights and remedies in respect of the product which the consumer has under the Trade Practices Act and similar State and Territory Laws, Whittley Marine Industries Pty Ltd, trading as Whittley Cruisers, warrants with respect to each new boat manufactured and sold by Whittley Marine Industries Pty Ltd, that for a period of twelve (12) months from the date of original retail sale with five years structural hull warranty, Whittley Marine Industries Pty Ltd will repair or replace free of charge any part of such boat (except gelcoat) found to be defective in factory materials or workmanship under normal use and operation within Australia PROVIDED THAT :-

1. The Boat (a) has been properly used and operated (b) has not been fitted with an engine (or engines) which exceeds the maximum horsepower specified by Whittley Marine Industries Pty Ltd (c) has been properly maintained and cared for (d) has not been used for water-ski or ocean racing or competition or commercial use (e) has not been modified or altered after having been delivered by Whittley Marine Industries Pty Ltd

2. Whittley Marine Industries Pty Ltd must approve all warranty work before repairs are carried out.

3. The repair or replacement is carried out by an authorised Whittley Marine Industries Pty Ltd dealer or by some other person approved in writing by Whittley Marine Industries Pty Ltd prior to the repair or replacement being carried out. It is the claimant's responsibility to return or transport the boat to (and from) the approved repairer. The liability of Whittley Marine Industries Pty Ltd under this warranty is limited to the repair or replacement of the defective part or parts, or the cost of such repair or replacement approved in writing by Whittley Marine Industries Pty Ltd prior to the repair or replacement being carried out. Provided that Whittley Marine Industries Pty Ltd complies with this warranty. Whittley Marine Industries Pty Ltd has no liability under this warranty for any consequential or other loss caused by or arising out of or relating to the defective part or parts, whether or not caused or contributed to by the negligence or breach of contract of Whittley Marine Industries Pty Ltd or its agents.

4. The claim under the warranty is made in writing, setting out full details of the problem encountered, addressed to Whittley Marine Industries Pty Ltd, 177 Settlement Rd Thomastown VIC 3074 and posted within the period of 12 months from the date of original retail sale. This warranty will become effective upon receipt by Whittley Marine Industries Pty Ltd, within one month of original retail sale, of the duly completed Whittley Marine Industries Pty Ltd Warranty card.

Whittley Cruisemaster 700 Standard Inventory

- Safety glass with sliding side windows for ventilation.
- Auto bilge pump.
- Walk through bow rail - one inch length stainless steel with eyes and small ties for buffers
- C.D. and radio.
- Cocktail cabinet - storage for glasses and bottles
- Self draining insulated ice chest.
- Complete dashboard array of instruments (VDO)
- Digital depth gauge in dash
- Double forward bunk bed with fold away fill-in cushions storage under.
- Drawers set.
- Electric anchor winch 50 m chain and 20 lb anchor.
- Fold out rear bed/ lounge.
- Four seater convertible dinette at rear and four seater dinette in the bow
- Upright fridge /freezer
- Full shower and head including hand basin and toiletry cabinet.
- Fully insulated engine box.
- Full covers and rear flyscreen
- Adequate interior lighting
- Handmade teak cabinets
- Large perspex front hatch with adjustable stays.
- Heavy duty wiper, blade and arm.
- Hot and cold retractable stern shower.
- Integrated bowspit to accommodate the lazy anchor, electric winch hidden under the two
- front rope lockers
- Large side pockets.
- Advanced battery management system, with two deep cycle house and one start battery.
- Metho twin burner cooktop.
- Microwave (with 240 V shore power only)
- Pressurised hot and cold water system.
- Portable chemical toilet
- Marine radio.
- Rear integrated marlin board with lighting.
- Rear stainless steel fold-away ladder.
- Removable cockpit mat for fishing.
- Shore power - 240 V incl. electric hotwater service.
- Light solar panel on the hardtop charging ailing battery via diode system.
- Large sunroof in full length hardtop.
- Six large and two small cleats conveniently positioned.
- Ample grab rails conveniently positioned.
- Dual helm seat and foldout passenger.
- Folding mast light.
- Mirror.
- Curtain cabin divider.
- Sports steering wheel.
- Flick mixer galley and shower.
- Stainless steel galley sink
- Tool box step
- Twin aerials.
- Ultra modern, car-like dash
- Walk-around deck.
- Walk through transom
- Wardrobe.



WHITTLEY MARINE INDUSTRIES PTY LTD

ACN 005 336 149

177 Settlement Road Thomastown Victoria 3074

Telephone (03) 9465 1644 Fax (03) 9465 2386

(e-mail) whittley@ocean.com.au (Internet) www.whittley.com.au

Your Authorised Whittley Dealer

